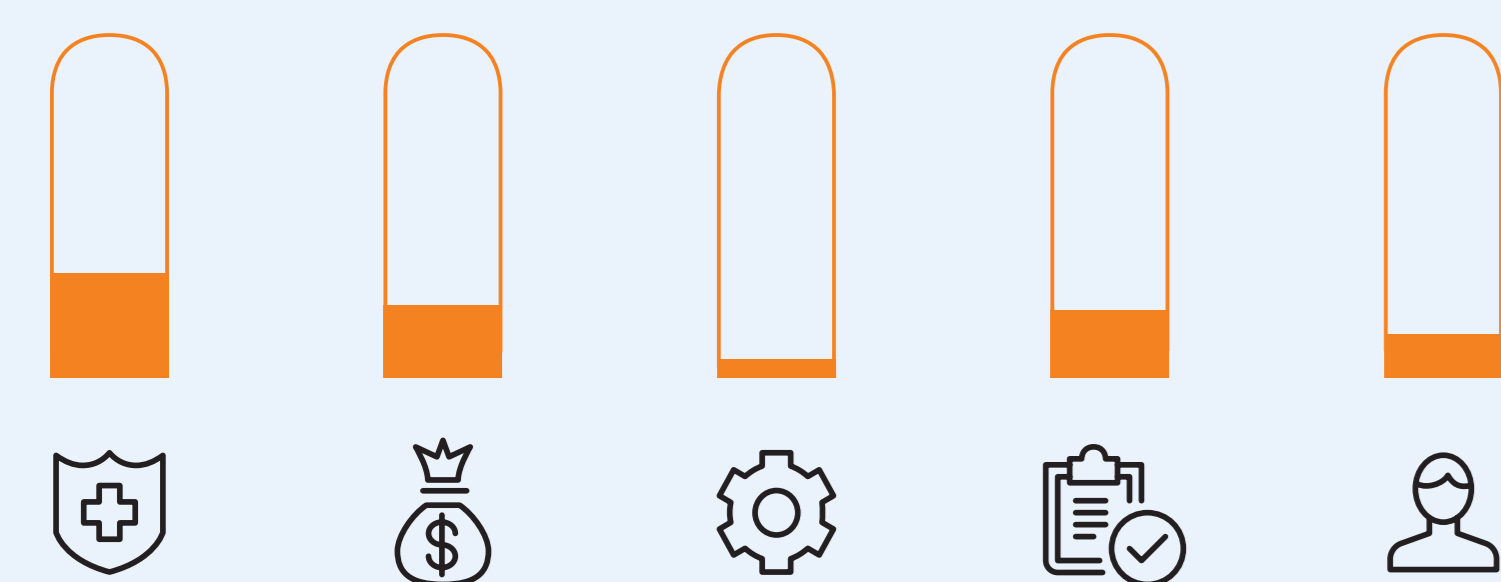




Non-Autonomous Pharmacy

- Minimal to no automation
- Data primarily managed on paper or in disparate spreadsheets
- Pharmacists heavily engaged in distribution with little direct patient interaction. Technicians and nurses spend time on manual drug management (purchasing, locating, counting)

Level 1



Performance Elements

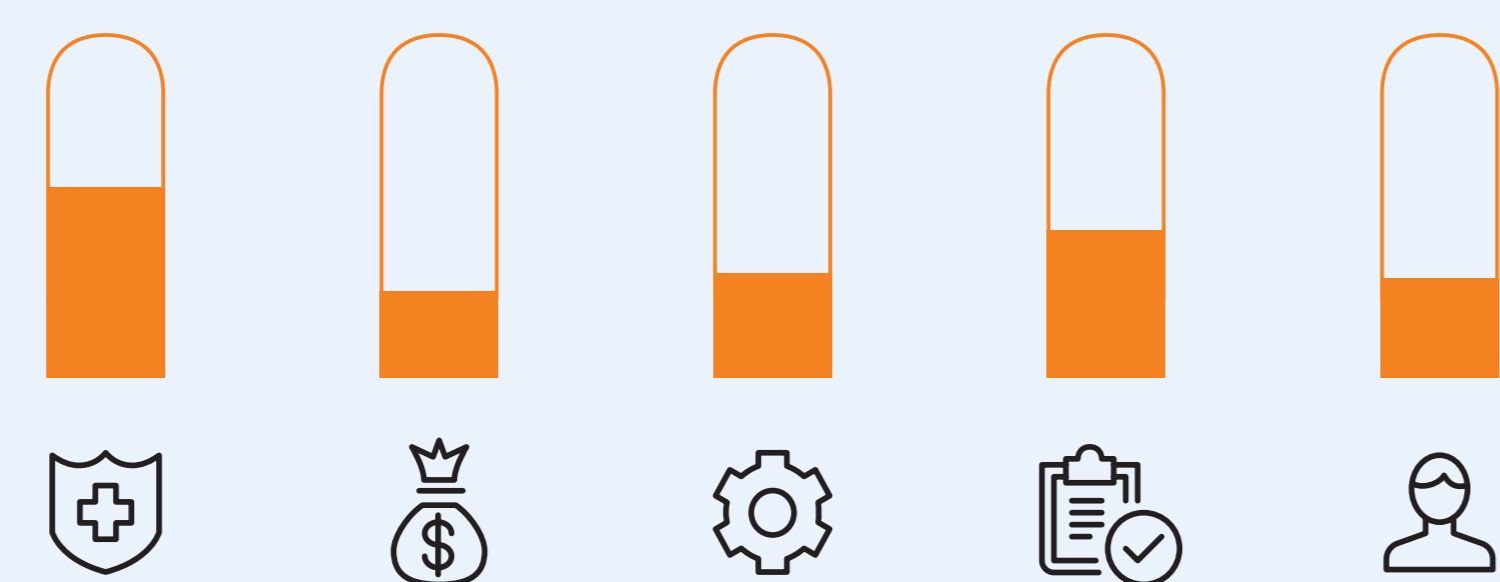
- Safety
- Financials
- Efficiency
- Compliance
- People



Limited Autonomous Pharmacy

- Some automation, including some barcode tracking
- Data managed disparately across sites with some visibility
- Pharmacists largely focused on distribution and verification. Technicians and nurses manually responsible for most drug management with light automated support

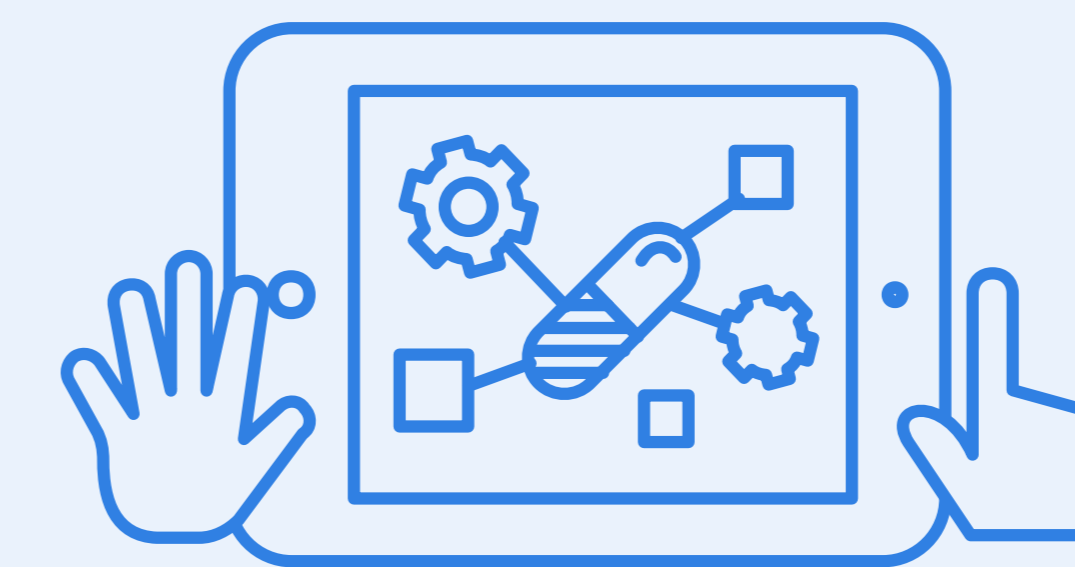
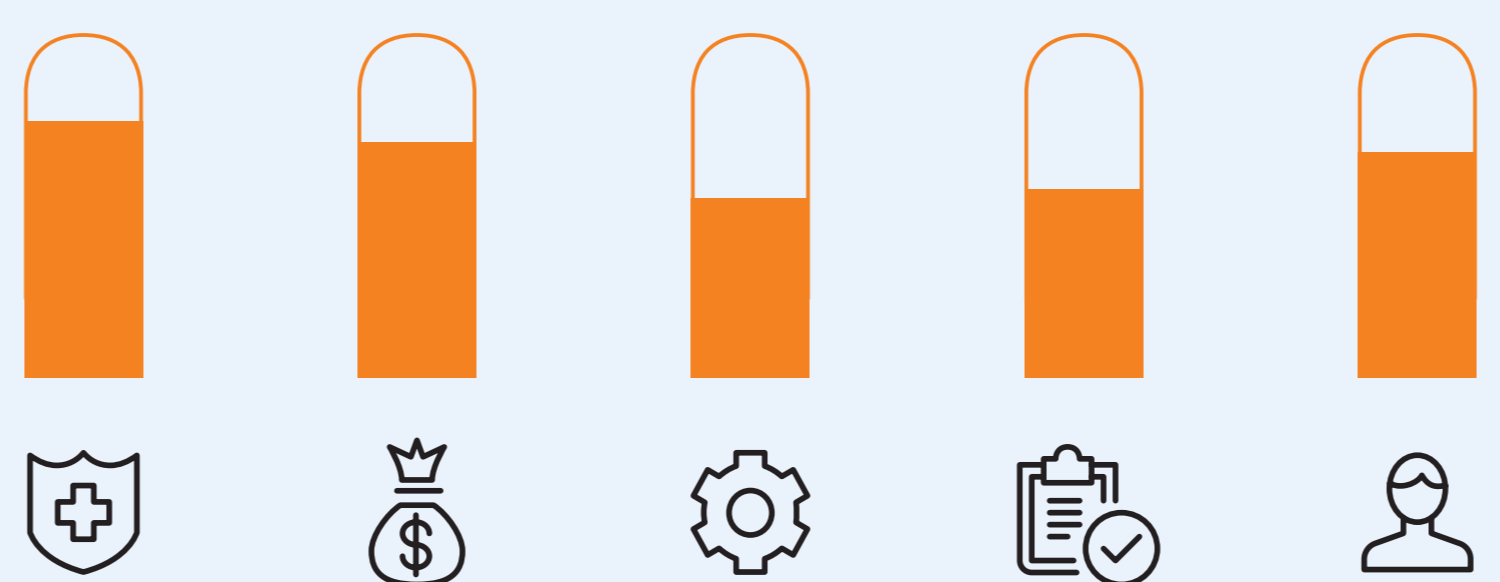
Level 2



Intermediate Autonomous Pharmacy

- Majority of processes automated, with barcode tracking applied widely
- Data integrated across enterprise and mostly visible
- Pharmacists somewhat focused on medication distribution, with some direct patient care. Technicians focus on manual procurement and controlled substances, and nurses rely on automated dispensing

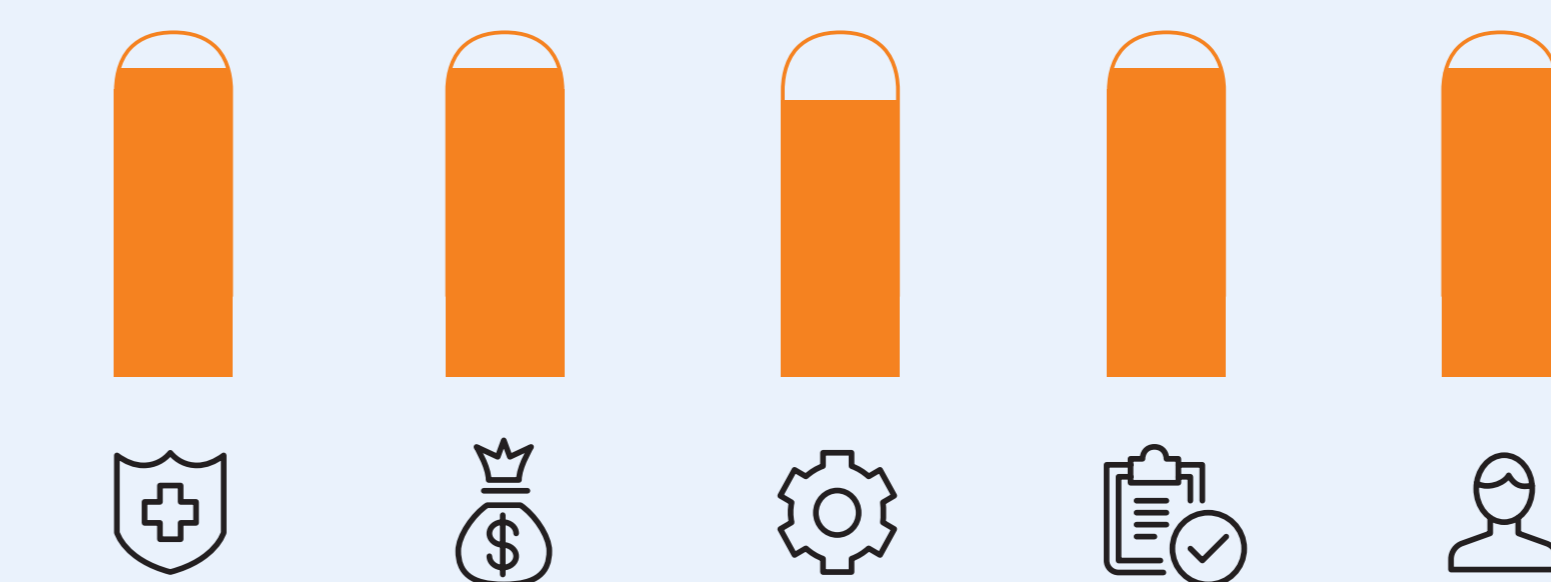
Level 3



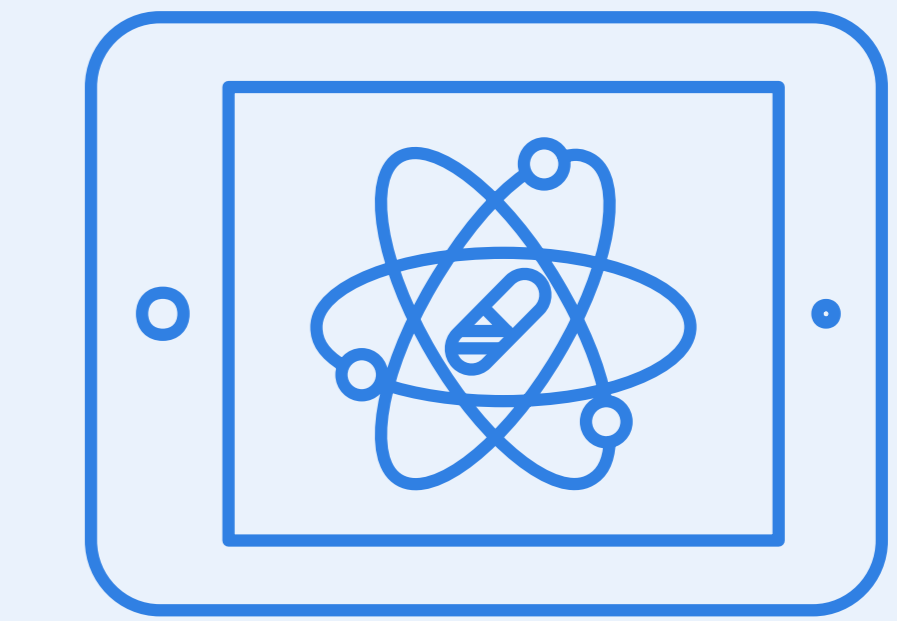
Highly Autonomous Pharmacy

- Extensive automation with few gaps across processes
- Near complete data visibility, offering workflow optimization and real-time insights
- Pharmacists routinely involved in direct patient care, population health initiatives, and clinical programs. Technicians maintain automation and use workflow app, and nurses focus most of their time on patient care

Level 4



Level 5



Fully Autonomous Pharmacy

- Complete process automation, tracking each dose as a node on the network
- Complete data visibility, real-time workflow optimization, and predictive intelligence
- Pharmacists realize full scope of their role in direct patient care and clinical program optimization. Technicians ensure optimal function of automation and use workflow app, and nurses focus on direct patient care

Outcomes

- | | |
|-----------------------------------------------|-----------------------------------|
| 0 | 100% |
| ✓ Medication Errors | ✓ Data Visibility |
| ✓ Medication Waste | ✓ Time Spent on Clinical Activity |
| ✓ Human Touches Pre-administration To Patient | ✓ Regulatory Compliance |

